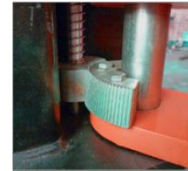




Hydraulic two post lift with top connection bar



Slanted lock teeth



Control box



Round rubber



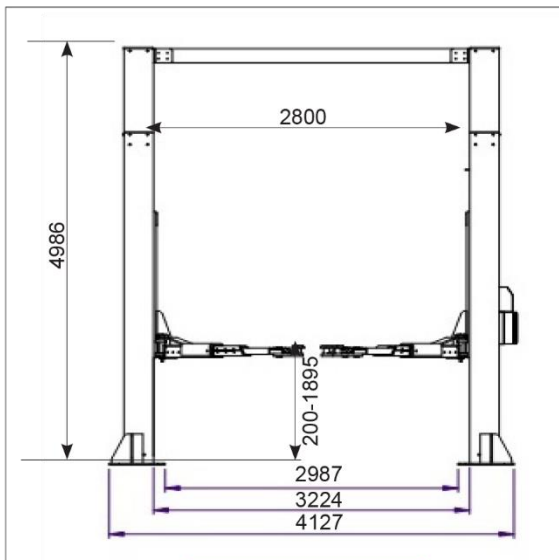
Optional: Square rubber



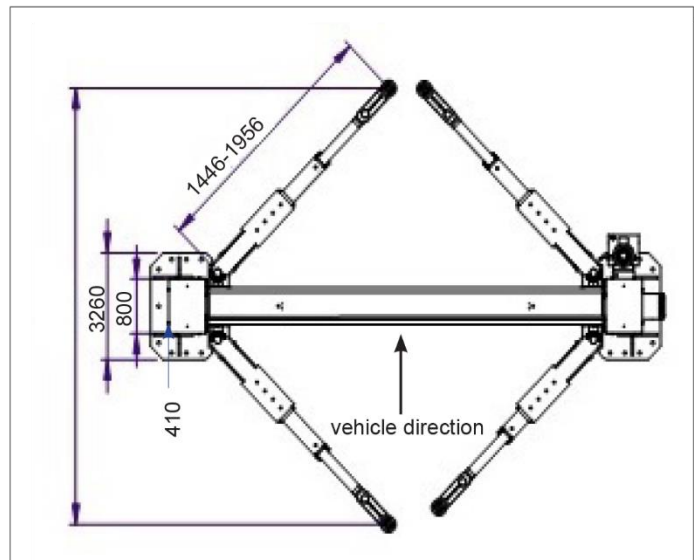
Foot protection bar



Optional adapter
70/150mm



Dimension Drawing



Standard: three stages arm

Features:

- 1 24V Low voltage control;
- 2 With up limit switch to avoid collision when lifting up the vehicles;
- 3 Chain transmission and steel cables synchronization system; Stiff structure connected by crossbar;
- 4 Standard with 3stages arms; 2stages colum for convenient transportation;



Specification

Parameters	LJCC2080A
Power Supply	220 / 380V
Motor Power	3KW /4HP
Capacity	8 Ton
Lifting Height	1830/1895 mm
Pass Width	2800 mm
Lift Height	4986 mm
Lift Width	4127 mm
Min Lifting Height	200 mm
Drive	Electrical Hydraulic